

GWST-MGSF Multi Grip Splined Threaded Insert

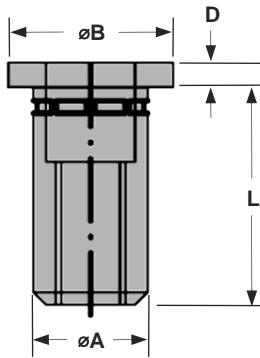
Steel · Large flange · Splined · Round · Open end · Multi-grip
M6 - M8

Features

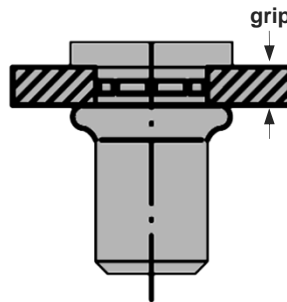
- Multi-grip capability accommodates wide variations in material thickness
- Knurling for increased anti-twist protection
- Large drilling hole tolerance
- Can be used for very thin sheet materials from 0.5 mm
- Large flange head provides a load bearing surface and reinforces the hole to prevent push-out

Material

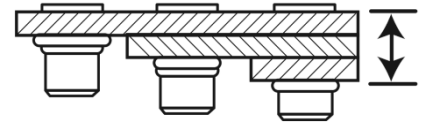
- Steel, galvanised



Before Placement



After Placement



Multi grip capability allows replacement of many standard blind rivets with just one fastener

Part No.	Thread Size	Grip Range		Hole Size	øA	øB	D	L
		min.	max.					
GWST-MGSFM6-0565	M6	0.5	6.5	9.1	9.0	12.0	1.5	18.0
GWST-MGSFM8-0580	M8	0.5	8.0	11.1	11.0	14.0	1.5	20.0

Thread Size	Tightening torque	Thread breaking force	Shear strength
	Nm max.	kN	kN
M6	12.0	18.0	3.9
M8	30.0	28.0	5.1



Can't find what you are looking for?

We can provide unique and customized solutions.
Contact your nearest [Gripwell](#) team for assistance!